

DRIVABLE

Universal Adapter

SQUARE SHAFT TO ANY 1-INCH BAR

The Chance Universal Adapter connects a 1.5-inch helical pile to **any** 1-inch diameter bar.

By countersinking with a drive tool, tieback wall anchors can be installed in front of the wall, reducing safety concerns and increasing installation speed.



*Hardware shown is included.

WHAT MAKES IT GREAT

- Adaptable with a variety of 1" all thread and thread bar
- Allows all tieback components to be installed and driven in from outside the wall
- Domestically sourced
- Hot dipped galvanized per ASTM A153

Catalog No.	Product Series	L x W x H (inches)	Weight (lbs)	Ultimate Capacity (tension)	Coating
C1502189	SS5/SS150	2.5 x 3.5 x 8.6	12	70 kip	Galvanized



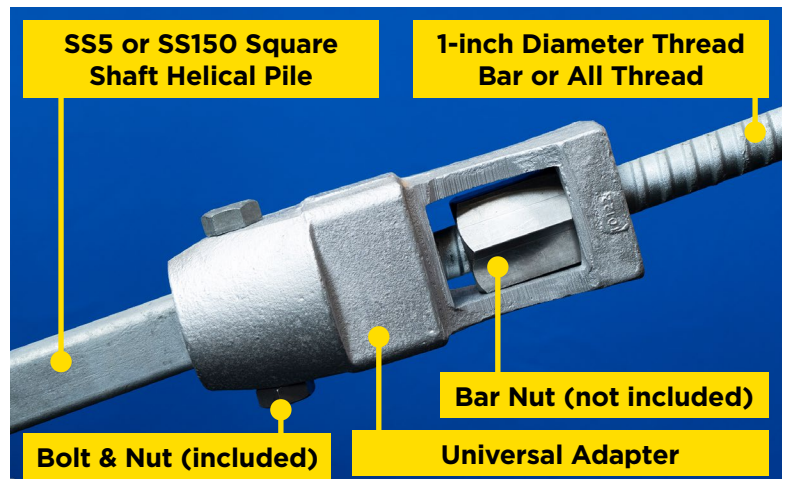
HOW IT WORKS

Once the minimum embedment is achieved, attach the universal adapter to the exposed square bar shaft with the provided nut and bolt. Insert any thread form 1-inch diameter bar into the opening with the appropriate load nut. If needed, the installer can then place the drive tool over the adapter and continue with the installation until final torque and embedment is achieved.

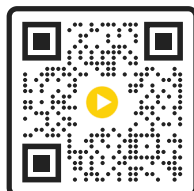


DRIVE TOOL

The benefit of this fitting is the ability to torque the adapter while a 1-inch diameter bar is attached. For information on purchasing or fabricating your own drive tool, contact civilconstruction@hubbell.com.



SCAN OR CLICK FOR A VIDEO



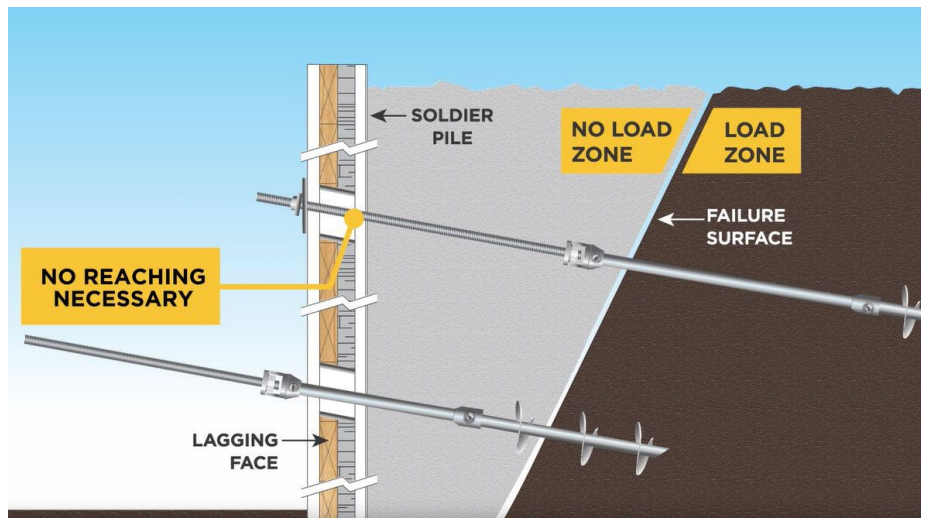
CHANCE TIEBACKS

Chance helical tieback anchors provide lateral support in soil retention applications including both permanent and temporary sheet pile walls, marine bulkheads, concrete reinforced walls, precast concrete panel walls, and more. They have been used in multi-tier tieback walls to heights of 50 feet. Unlike driven piles, square shaft anchors can be installed with small construction equipment in limited access sites and do not cause vibration that may damage adjacent structures, providing a more sustainable solution.



ENGINEERED CAPACITY

Helical anchors transfer loads to the soil by end bearing helical plates, not skin friction. The square shaft helical anchors provide predictable capacity and the entire assembly can be loaded immediately after installation.



EACH UNIVERSAL ADAPTER COMES WITH:

- 3/4" Gr 5 Coupling Bolt & Nut
- 2" Round Washer for applications with 1" UNC Thread bar (Note: Washer not required to meet tensile loads but does help with the centering the all-thread bar.)

CHANCE® The Certified Helical Anchor

CHANCE Civil Construction | 210 North Allen Street | Centralia, MO 65240

©Copyright 2023 Hubbell Incorporated. Because Hubbell has a policy of continuous product improvement, we reserve the right to change design and specifications without notice. Printed in the U.S.A. | SF04363E_0623

